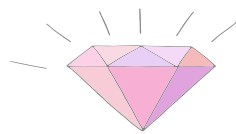
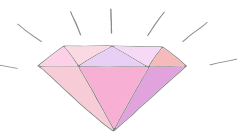


Mrs. Lepre's English Class



ROOM 1008



How to Contact Me

Kimberly.Lepre@sweetwaterschools.org



www.jupitered.com (our gradebook and communication program)

Class Materials

1. Several blue or black pens (erasable is fine)
2. A highlighter
3. One college-ruled spiral notebook



Class Rules

- 1 Come to class on time and with all materials.
- 2 Complete all assignments completely and on time.
- 3 Take pride in your work.
- 4 Respect yourself, others, and all property.
- 5 Follow ALL school and classroom rules.

Staying Informed

The best way to know what we're doing in class, which assignments are due and when, and know your grade, is to regularly log into Google Classroom and JupiterEd. ALL students and parents will receive individual usernames and passwords for JupiterEd and can view Google Classroom on the student's iPad. It is you and your parents' responsibility to stay informed and keep track of how you're doing, not only in English, but ALL classes.

Don't wait until it's too late to fix your grade! You CAN get good grades in middle school, but it takes organization and communication to do that!

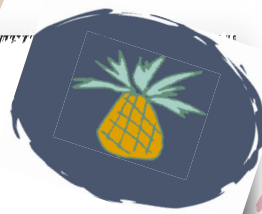
Class Work and Absences

You are required to complete ALL class work and homework assignments. Any missing work will be indicated by a "/" or "missing" in JupiterEd and has a negative effect on your grade.

If you're absent for any reason, you're responsible for finding out what you missed and making it up. You are given one day to make up your assignment for each day you missed.

If you know in advance that you'll be absent, let me know so that I can give you your work.

How You'll Be Graded



Summative

Summative assignments evaluate how much you've learned and progressed at the end of a unit.

Reading

You're responsible for independent and class reading assignments.

Achieve 3000

All students are required to complete 40 Achieve 3000 activities each semester.



Formative

Formative assignments monitor your progress throughout a unit. You'll receive regular feedback to help you improve your learning and ability to meet the standards.

Final Exam

All students take an English End-of-Course exam at the end of the semester. This is to assess the skills you've gained throughout the semester, and your ability to apply those skills to different situations.

Citizenship Grades

Citizenship grades are based on student participation, attendance, and turning in assignments on time.

If you submit an assignment late, your citizenship grade will be affected, NOT scholarship. Also, if you are excessively tardy or absent, this will have a negative affect on your citizenship grade.

Students with low citizenship grades will be placed on the nonprivileged list and will be unable to participate in school activities and sport.

ENGLISH GRADING SCALE

4 Mastery

I could teach a friend or consistently demonstrate this standard without help.

3 Approaching

I can demonstrate this standard without help, but I still make some mistakes.

2 Developing

I mostly understand the standard, but am still stuck in some parts and need help.

1 Beginning

I've just learned this skill and am still confused. I can demonstrate some parts of the standard without help.

